

PORTABLE AIR COMPRESSOR

**MONTGOMERY
WARD**

owner's guide and PARTS LIST

12 GALLON
1 H. P., PORTABLE
AIR COMPRESSOR
MODEL 6557

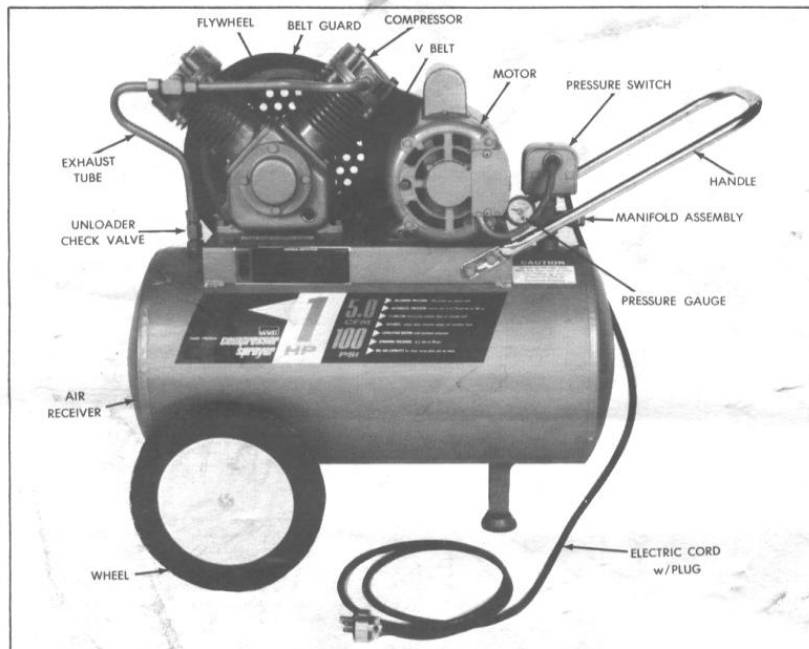
S/N-57E 24512
Model-75-6557C

This Montgomery Ward tank air compressor is precision made of the finest materials to efficiently perform many services around the home, farm, garage and workshop. It can be used for paint spraying, air cleaning, operating air tools, inflating tires, and many other purposes where air under controlled pressure is required. It is equipped with a capacitor-start

motor with overload protector, automatic pressure switch and pressure gauge.

CAREFULLY READ THE INSTRUCTIONS FOR ASSEMBLY AND THE OPERATING INFORMATION BEFORE ATTEMPTING TO USE THE COMPRESSOR.

73, 75



SPECIFICATIONS

Automatic Pressure Range	70 to 100 PSI
Air Delivery	6.3 CFM @ 40 PSI 5.0 CFM @ 100 PSI
Motor	1 HP, 3450 RPM, 115/230V, 60 Cy. AC, Single Phase w/Built-in Thermal Overload Protection — Automatic Reset

CAUTION

Due to the high performance of the compressor, it requires a full 115-volt service and a single 20-amp circuit. Low voltage can cause the motor to lag, lights to dim, and fuses to blow.

OPERATING INFORMATION

ELECTRICAL REQUIREMENTS — This unit operates on either 115-volts or 230-volts, 60-cy. AC. It is factory wired for 115-volts. Be sure the voltage at the outlet corresponds. The circuit should be rated for 20-amp. using a minimum wire size of 12 gauge. Additional items hooked to this circuit will reduce the available amps and will adversely affect the unit operation. **Low voltage** may prevent motor from starting, or cause it to burn out. If the unit is to be used on 230-volts, A QUALIFIED ELECTRICIAN must rewire motor and change the cord and plug for 230-volt operation.

EXTENSION CORDS — If an extension cord is needed, the following wire sizes must be used.

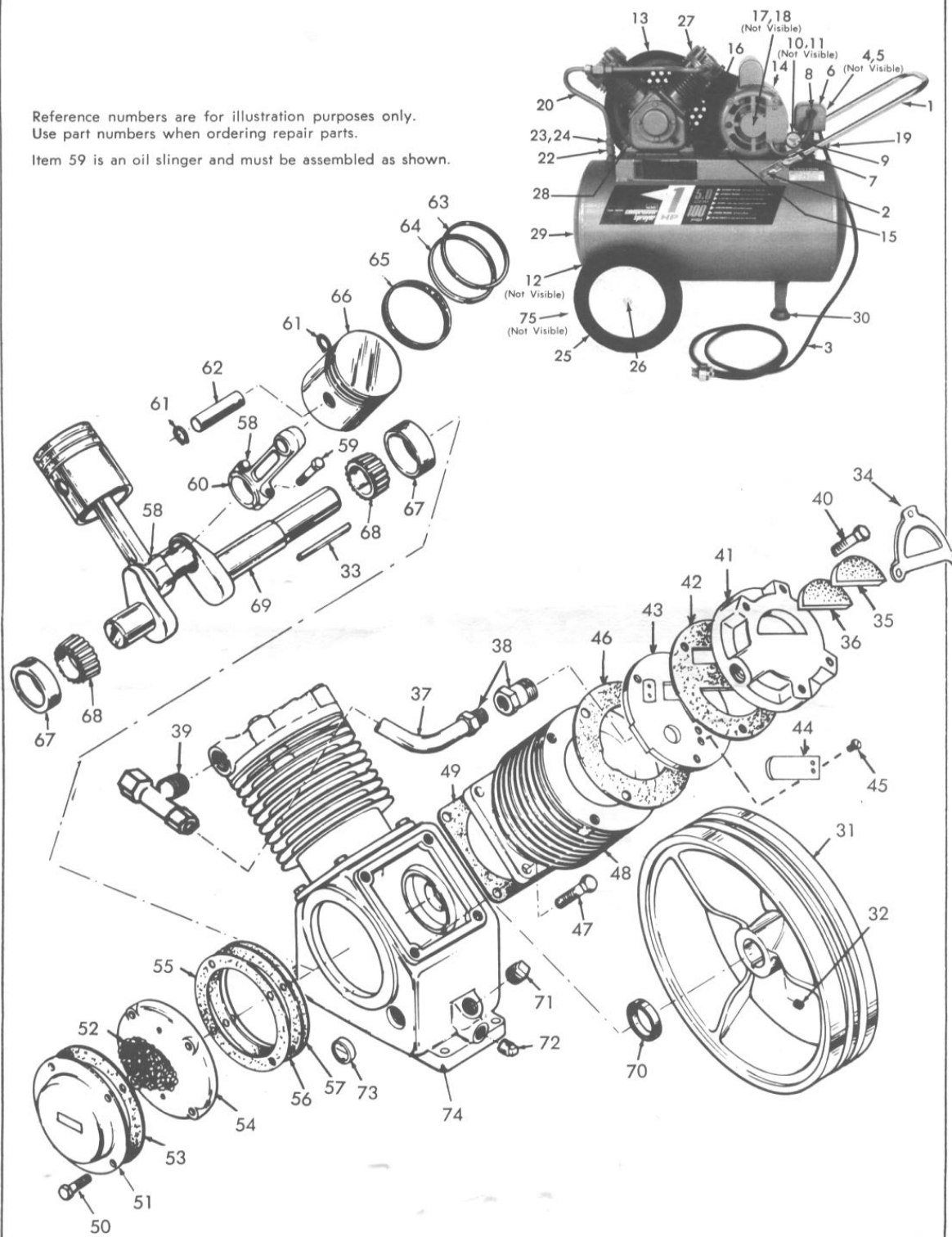
25-Ft. Cord — Not less than 14 Gauge Wire
50-Ft. Cord — Not less than 12 Gauge Wire
100-Ft. Cord — Not less than 10 Gauge Wire

FUSES — Use 30-Amp. on commercial wiring circuits. For residential circuits, use 20-Amp. delayed action fuse such as Fusestat or Fusetron. Fusestats will carry a 10% overload indefinitely, or 135% overload for 20 seconds before blowing.

HELPFUL REMINDERS

- 1 Be sure to lubricate according to instructions.
- 2 Do not readjust or remove safety valve.
- 3 Do not readjust pressure switch to a higher pressure than set at factory.
- 4 Follow manufacturer's caution instructions when spraying flammable paints or other materials.
- 5 Drain accumulated moisture from tank after each use.
- 6 Open shut-off valve and release air from tank after each use, and before restarting when motor stalls.
- 7 Do not use long extension cord of undersize wire.
- 8 To operate spray guns and other accessories requiring controlled air delivery, order and install a Pressure Regulator.
- 9 Use only Montgomery Ward parts for repair or replacement.

Reference numbers are for illustration purposes only.
Use part numbers when ordering repair parts.
Item 59 is an oil slinger and must be assembled as shown.



PARTS LIST

REF. NO.	PART NO.	DESCRIPTION	NO. REQ.	REF. NO.	PART NO.	DESCRIPTION	NO. REQ.
1	M-583C	Handle	1	38	Z-510	Straight Compression Fitting	1
2	M-1459	Screw, thread rolling 5/16-18 x 9/16 in. long	4	39	Z-710	Compression Tee	1
3	P-3746A	Electric Cord with Plug 14/3 x 8 ft.	1	40	M-1190	Cap Screw, Hex 5/16-18x1-3/4 inch long (Reed Valve Head)	8
4	M-1757	Connector-3/8 in. x St (fasten Electric Cord)	1	41	M-1561	Reed Valve Head	2
5	P-3717A	Grounding Clip	1	42	M-1564	Reed Valve Plate Gasket	2
6	P-3276A	Pressure Switch	1	43	M-1562	Valve Plate	2
7	M-1404	Electric Cord 14/2 x 14 in. (pressure switch to motor)	1	44	M-1563	Reed Valve	4
8	M-1630	Rubber Grommet-3/16 in.	1	45	M-1565	Thread Rolling Screw 6-32x1/4 inch long (Valve)	8
9	M-1249	Pressure Gauge	1	46	B-31	Head Gasket	2
10	M-947B	Bushing (pressure gauge)	1	47	M-567	Cap Screw, Hex 5/16-18x3/4 inch long (Cylinder Flange)	8
11	M-980B	Street Ell (pressure gauge)	1	48	B-6A	Cylinder	2
12	M-521	Drain Cock	1	49	A-29	Cylinder Flange Gasket	2
13	Z-642	Belt Guard w/attaching hardware	1	50	M-696	Cap Screw, Hex 1/4-20x3/4 inch long (Breather and Crankcase Cover)	4
14	P-3582A	Motor, 115/230V, 1 Phase, 3450 RPM	1	51	A-100	Breather Chamber Assembly	1
15	M-1459	Screw, thread rolling 5/16-18 x 9/16 in. long	4	52	A-100-3	Breather Element	1
16	4L390	V Belt	1	53	C-30	Crankcase Cover Gasket	1
17	P-3579A	Motor Pulley	1	54	C-14A	Crankcase Cover	1
18	M-922A	Socket Head Set Screw 5/16-18 x 5/16 in. long	1	55	C-30	Crankcase Cover Gasket	1
19	Z-191	Manifold Assembly	1	56	C-30A	Crankcase Cover Gasket (Shim) .005 inch thick	1
20	M-1732	Exhaust Tube	1	57	C-30B	Crankcase Cover Gasket (Shim) .010 inch thick	1
22	M-1225	Unloader Check Valve	1	58	M-564	Cap Screw, Hex 1/4-28x1-1/4 inch long (Connecting Rod)	3
23	M-1244	Compression Nut (unloader check valve)	1	59	M-1422	Cap Screw, Hex 1/4-28x2 inches long (Connecting Rod)	1
24	M-1245	Compression Ferrule (unloader check valve)	1	60	A-3	Connecting Rod	2
25	P-3581A	Wheel	2	61	A-102	Piston Pin Retaining Ring	4
26	M-714	Retaining Cap	2	62	B-21	Piston Pin	2
27	BV1	Compressor Pump	1	63	B-10A	Piston Ring	2
28	M-1454	Screw, thread rolling 5/16-18 x 7/8 in. long	4	64	B-10B	Piston Ring	2
29	P-3454D	Air Receiver, 12 gallon, standard	1	65	B-10D	Piston Ring (Oil Abutment)	2
30	P-3580A	Vibration Isolator	1	66	B-4A	Piston (only)	2
31	A-7B	Flywheel	1	67	C-16	Main Bearing Cup	2
32	M-568	Socket Head Set Screw (Flywheel)	1	68	C-16A	Main Bearing Cone & Roller	2
33	U-8	Machinery Key (Flywheel)	1	69	C-5	Crankshaft	1
34	P-3703A	Filter Retainer	2	70	O5-A5A	Oil Seal	1
35	M-1586	Filter	2	71	M-485	Oil Fill Plug 3/8 inch	2
36	M-1587	Filter, Silencer	2	72	M-570	Oil Drain Plug 1/8 inch	2
37	M-1726	Exhaust Manifold	1	73	B-14	Oil Level Gauge	1
				74	C-9G	Crankcase	1
				75	M-488	Washer 1/2 inch	2

ASSEMBLY

This unit is shipped completely assembled except for the handle and wheels. To assemble, remove the unit and all parts from the carton. Set the unit upright and slide washer (75) on axle and wheel (25) with hub in toward tank on axle. Place retaining cap (26) on end of axle and tap lightly. Attach handle (1) to the unit with the four screws (2) provided.

IMPORTANT: BEFORE STARTING THE UNIT, check oil according to the instructions under "Lubrication".

CAUTION: AN AIR PRESSURE REGULATOR MUST BE USED WHEN OPERATING LOW PRESSURE AIR TOOLS SUCH AS SPRAY GUNS, PAINT TANKS, BLOW GUNS, ETC.

NEVER USE HIGHER THAN 100 LBS. PRESSURE IN TANK.

OPERATION

When oil has been checked, close shut-off valve at manifold assembly (19) at air outlet and attach air hose. Plug electric cord (3) into an outlet supplying the proper current. Motor will start, and compressor will run until air pressure in the tank reaches 100 PSI. Then the motor will automatically shut off. When air is used and the pressure drops to 70 PSI, the Automatic Pressure Switch (6) will restart the motor, and it will run until maximum pressure is reached again. The pressure gauge (9) lets you know at all times the pressure within the tank.

The air receiver is equipped with a safety valve at manifold assembly (19) and is non-adjustable. **IMPORTANT — DO NOT READJUST** the Pressure Switch (6) to a higher pressure than set at the factory. **DO NOT READJUST OR REMOVE** Safety Valve.

CHECK VALVE — The Unloader Check Valve (22) controls the flow of air entering the tank, and checks it from returning back into the tubing and the compressor. If the check valve is leaking because it is dirty, or damaged, the motor will not start, and the overload protector will operate. Should the motor fail to start, or stall during operation, pull the cord from the outlet. Inspect the check valve to see that it is clean and in good condition after each 200 hours of operation.

MOTOR OVERLOAD PROTECTOR — This unit is equipped with an automatic thermal overload that will stop the motor if an overload or low voltage condition should occur. If this happens, disconnect unit and allow motor to cool for 10-15 minutes and check voltage at outlet before connecting unit. Reset manually by depressing reset button.

AIR FILTER — Clean the intake filter (35) and silencer (36) after each spraying job to assure clean air at full pressure. To clean, remove filter and silencer. Wash filter with solvent or thinner for the paint just used. Let dry. **DO NOT USE GASOLINE.** Clean silencer by blowing air across surface. Replace silencer and filter. **NEVER** operate the unit without the filter and silencer in place.

DRAIN AIR & MOISTURE from the tank after each use. To release air, turn the Globe (shut-off) valve one-half turn to the left. Drain moisture by opening the drain cock (12) at the bottom of the rear of the tank, and tilting front end of tank up. Before restarting, be sure to close air shut-off valve, and close the drain valve.

SPRAYING FLAMMABLE PAINTS OR LIQUIDS —

Always locate compressor maximum distance from spraying area when using materials of a flammable nature indoors to avoid fire or explosion. Note warning statements and observe precautions recommended on containers holding such materials.

LUBRICATION & OIL CHANGE —

Do not fill crankcase while compressor is operating. Remove plug (72) and drain original oil after 8 hours of operating time and use a good grade of SAE-10W30 motor oil. Change oil after every 90 days of operation. Check oil level each time before starting and after every 4 hours of operating time, adding oil when necessary.

IMPORTANT — After adding oil, run the compressor without pressure for 15-20 minutes to lubricate piston and bearings.

OPTIONAL ACCESSORIES

Montgomery Ward has a complete line of paint spraying guns and accessory equipment to make your work with the compressor faster and easier.

FOR PAINT SPRAYING — Use non-bleeder type spray gun with air hose and pressure regulator. We recommend Ward's Spray Gun model 75-6331 or 75-6332, and air hose 75-6245.

PRESSURE REGULATOR — A pressure regulator and gauge are required to reduce delivery of high pressure air from the air storage tank down to safe recommended spraying pressures for spray guns, grease guns, blow guns, paint tanks, or to pump up auto, truck and tractor tires. Order article No. 75-6220 to fit this unit.

SERVICE NATIONWIDE



how to obtain service

The merchandise you have purchased from us has been carefully engineered and manufactured under Wards rigid quality standards and should give you satisfactory and dependable operation. However, like all mechanical merchandise, it may occasionally require adjustment or maintenance. Should you ever need technical assistance, please contact or write your nearest Wards Retail Store, Catalog Store or Catalog House.

PROVIDE FOLLOWING:

1. Model, serial number and all of the other data shown on the model plate.
2. The date and the Wards branch from which you purchased your merchandise.
3. State briefly the trouble you are having.



how to obtain replacement parts

Replacement Parts may be obtained from your Wards Retail Store, Catalog Store or Catalog House and will be made available at current prices. If requested, prices will be quoted in advance when not listed.

When requesting replacement parts, be sure to give the model and serial number which is shown on the model plate. Also give the part number and the name of the part as shown in the parts list.

If you order by mail, you will pay the transportation charges from the shipping point.